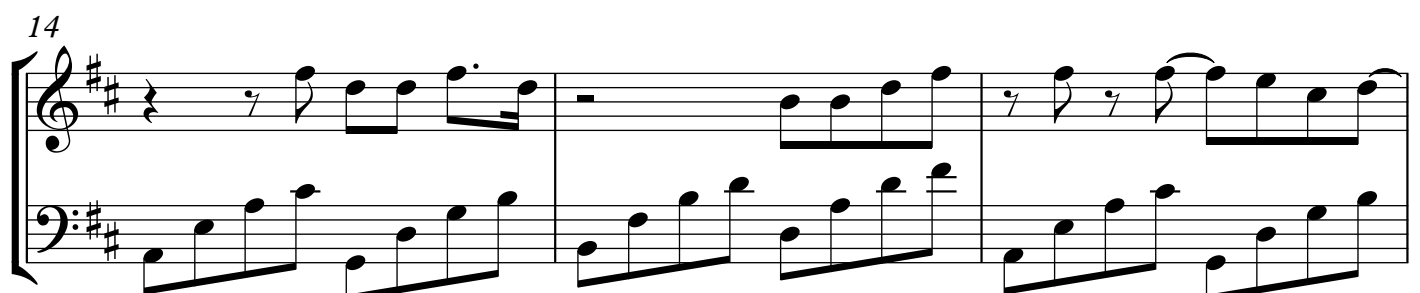
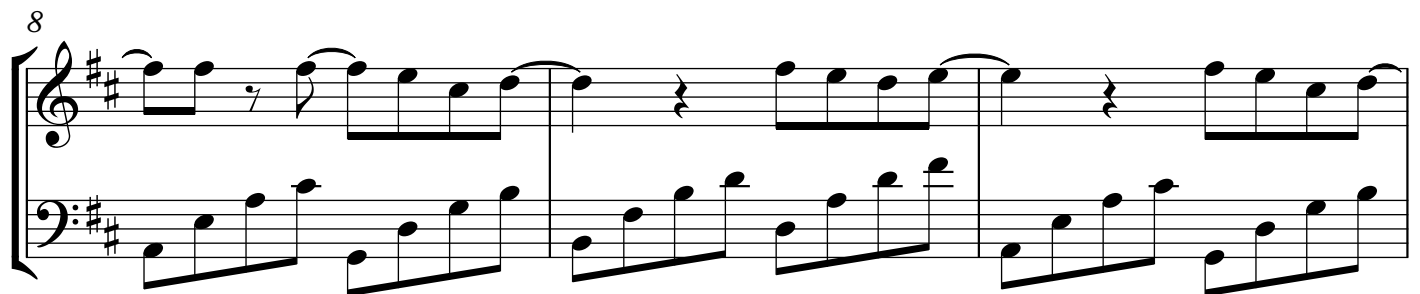
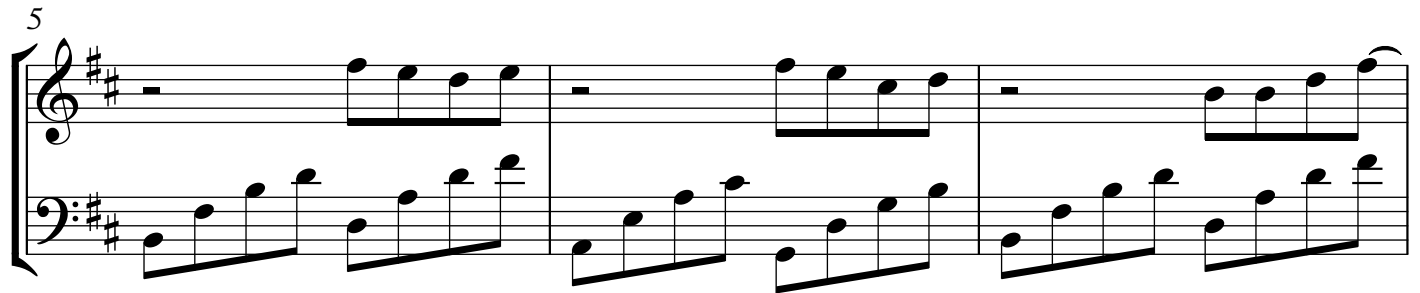


# Монеточка - Нимфоманка

YouTube channel PianoX

[vk.com/pianox](https://vk.com/pianox)



17

Measures 17-19 of a musical score in D major (two sharps). The treble clef staff features a melody with eighth and quarter notes, including a dotted quarter note in measure 18. The bass clef staff provides a harmonic accompaniment with eighth and quarter notes. Measure 19 ends with a whole note chord in the treble.

20

Measures 20-22 of a musical score in D major. The treble clef staff continues the melody with eighth and quarter notes, featuring a dotted quarter note in measure 21. The bass clef staff has a more active accompaniment with eighth and quarter notes. Measure 22 ends with a whole note chord in the treble.

23

Measures 23-25 of a musical score in D major. The treble clef staff features a melody with eighth and quarter notes, including a dotted quarter note in measure 24. The bass clef staff provides a harmonic accompaniment with eighth and quarter notes. Measure 25 ends with a whole note chord in the treble.

26

Measures 26-28 of a musical score in D major. The treble clef staff features a melody with eighth and quarter notes, including a dotted quarter note in measure 27. The bass clef staff provides a harmonic accompaniment with eighth and quarter notes. Measure 28 ends with a whole note chord in the treble.

29

Measures 29-31 of a musical score in D major. The treble clef staff features a melody with eighth and quarter notes, including a dotted quarter note in measure 30. The bass clef staff provides a harmonic accompaniment with eighth and quarter notes. Measure 31 ends with a whole note chord in the treble.

31

Measures 31-32 of a musical score in D major. Measure 31 features a treble staff with a half rest followed by a sixteenth-note triplet (F#, G, A) and a quarter note (B), and a bass staff with a half note (D) and a quarter note (F#). Measure 32 features a treble staff with a half rest followed by a quarter note (B) and a half note (D), and a bass staff with a half note (D) and a quarter note (F#).

33

Measures 33-34 of a musical score in D major. Measure 33 features a treble staff with a half rest followed by a sixteenth-note triplet (F#, G, A) and a quarter note (B), and a bass staff with a half note (D) and a quarter note (F#). Measure 34 features a treble staff with a half rest followed by a quarter note (B) and a half note (D), and a bass staff with a half note (D) and a quarter note (F#).

35

Measures 35-37 of a musical score in D major. Measure 35 features a treble staff with a half rest followed by a sixteenth-note triplet (F#, G, A) and a quarter note (B), and a bass staff with a half note (D) and a quarter note (F#). Measure 36 features a treble staff with a half rest followed by a quarter note (B) and a half note (D), and a bass staff with a half note (D) and a quarter note (F#). Measure 37 features a treble staff with a half note (B) and a quarter note (D), and a bass staff with a half note (D) and a quarter note (F#).

38

Measures 38-40 of a musical score in D major. Measure 38 features a treble staff with a half note (B) and a quarter note (D), and a bass staff with a half note (D) and a quarter note (F#). Measure 39 features a treble staff with a half note (B) and a quarter note (D), and a bass staff with a half note (D) and a quarter note (F#). Measure 40 features a treble staff with a half note (B) and a quarter note (D), and a bass staff with a half note (D) and a quarter note (F#).

41

Measures 41-43 of a musical score in D major. Measure 41 features a treble staff with a half note (B) and a quarter note (D), and a bass staff with a half note (D) and a quarter note (F#). Measure 42 features a treble staff with a half note (B) and a quarter note (D), and a bass staff with a half note (D) and a quarter note (F#). Measure 43 features a treble staff with a half note (B) and a quarter note (D), and a bass staff with a half note (D) and a quarter note (F#).

44

Measures 44-46 of a musical score in D major (two sharps). The piece is in 4/4 time. Measure 44 features a treble staff with a half-note chord (F#4, A4) followed by eighth-note runs (B4, C#5, D5, E5) and a half-note chord (F#4, A4). The bass staff has a half-note chord (B2, D3) followed by eighth-note runs (C3, D3, E3, F#3) and a half-note chord (B2, D3). Measures 45 and 46 continue the eighth-note runs in both staves, with measure 46 ending on a half-note chord (F#4, A4) in the treble and (B2, D3) in the bass.

47

Measures 47-49 of a musical score in D major. Measures 47 and 48 continue the eighth-note runs from the previous system. Measure 49 features a treble staff with a half-note chord (F#4, A4) followed by eighth-note runs (B4, C#5, D5, E5) and a half-note chord (F#4, A4). The bass staff has a half-note chord (B2, D3) followed by eighth-note runs (C3, D3, E3, F#3) and a half-note chord (B2, D3).

50

Measures 50-52 of a musical score in D major. Measures 50 and 51 continue the eighth-note runs. Measure 52 features a treble staff with a half-note chord (F#4, A4) followed by eighth-note runs (B4, C#5, D5, E5) and a half-note chord (F#4, A4). The bass staff has a half-note chord (B2, D3) followed by eighth-note runs (C3, D3, E3, F#3) and a half-note chord (B2, D3).

53

Measures 53-55 of a musical score in D major. Measures 53 and 54 feature a treble staff with a half-note chord (F#4, A4) followed by eighth-note runs (B4, C#5, D5, E5) and a half-note chord (F#4, A4). The bass staff has a half-note chord (B2, D3) followed by eighth-note runs (C3, D3, E3, F#3) and a half-note chord (B2, D3). Measure 55 features a treble staff with a half-note chord (F#4, A4) followed by eighth-note runs (B4, C#5, D5, E5) and a half-note chord (F#4, A4). The bass staff has a half-note chord (B2, D3) followed by eighth-note runs (C3, D3, E3, F#3) and a half-note chord (B2, D3).

56

Measures 56-58 of a musical score in D major. Measures 56 and 57 feature a treble staff with a half-note chord (F#4, A4) followed by eighth-note runs (B4, C#5, D5, E5) and a half-note chord (F#4, A4). The bass staff has a half-note chord (B2, D3) followed by eighth-note runs (C3, D3, E3, F#3) and a half-note chord (B2, D3). Measure 58 features a treble staff with a half-note chord (F#4, A4) followed by eighth-note runs (B4, C#5, D5, E5) and a half-note chord (F#4, A4). The bass staff has a half-note chord (B2, D3) followed by eighth-note runs (C3, D3, E3, F#3) and a half-note chord (B2, D3).

59

Measures 59-61 of a musical score in D major. Measure 59 features a treble staff with eighth-note chords and a bass staff with a single eighth note. Measure 60 has a treble staff with a half note and a bass staff with a whole rest. Measure 61 contains a treble staff with a sixteenth-note triplet and a bass staff with eighth-note chords.

62

Measures 62-64 of a musical score in D major. Measure 62 has a treble staff with eighth-note chords and a bass staff with eighth notes. Measure 63 features a treble staff with a sixteenth-note triplet and a bass staff with eighth-note chords. Measure 64 has a treble staff with eighth-note chords and a bass staff with eighth notes.

65

Measures 65-66 of a musical score in D major. Measure 65 has a treble staff with a sixteenth-note triplet and a bass staff with eighth-note chords. Measure 66 features a treble staff with eighth-note chords and a bass staff with eighth notes.

67

Measures 67-69 of a musical score in D major. Measure 67 has a treble staff with a sixteenth-note triplet and a bass staff with eighth-note chords. Measure 68 features a treble staff with eighth-note chords and a bass staff with eighth notes. Measure 69 has a treble staff with eighth-note chords and a bass staff with eighth notes.

70

Measures 70-72 of a musical score in D major. Measure 70 has a treble staff with eighth-note chords and a bass staff with eighth notes. Measure 71 features a treble staff with eighth-note chords and a bass staff with eighth notes. Measure 72 has a treble staff with eighth-note chords and a bass staff with eighth notes.