

Ave Maria

Giulio Caccini

Measures 1-6 of the Ave Maria. The piece is in 4/4 time. The right hand has whole rests. The left hand plays a series of chords: F major (F, A, C), F major (F, A, C), F major (F, A, C), F major (F, A, C), F major (F, A, C), and F major (F, A, C).

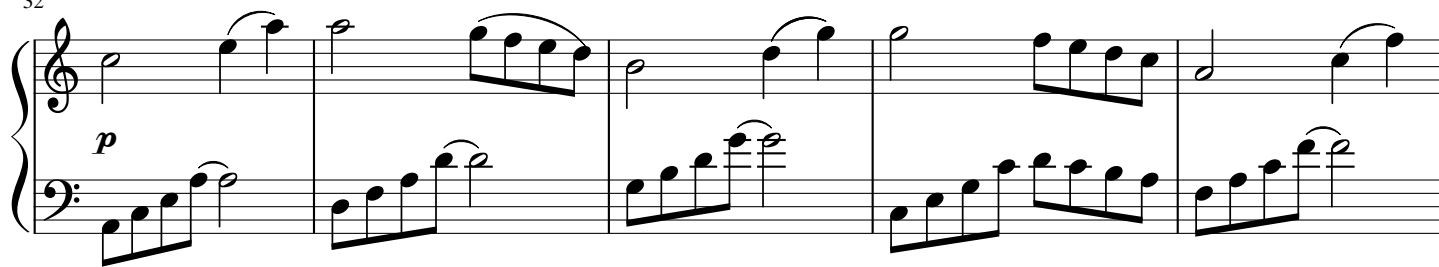
Measures 7-12 of the Ave Maria. Measure 7 has a repeat sign. Measures 8-12 show the right hand entering with a melodic line: G4 (half), A4-B4 (quarter), C5 (half), B4-A4 (quarter), G4 (half). The left hand continues with chords: F major (F, A, C), F major (F, A, C), F major (F, A, C), F major (F, A, C), F major (F, A, C), and F major (F, A, C).

Measures 13-18 of the Ave Maria. The right hand continues the melody: F4 (half), E4-D4 (quarter), C4 (half), B3-A3 (quarter), G3 (half), F3 (half). The left hand continues with chords: F major (F, A, C), F major (F, A, C), F major (F, A, C), F major (F, A, C), F major (F, A, C), and F major (F, A, C).

Measures 19-25 of the Ave Maria. The right hand continues the melody: E4 (half), D4-C4 (quarter), B3-A3 (quarter), G3 (half), F3 (half), E3 (half). The left hand continues with chords: F major (F, A, C), F major (F, A, C), F major (F, A, C), F major (F, A, C), F major (F, A, C), and F major (F, A, C). A *mf* dynamic marking appears in measure 24.

Measures 26-31 of the Ave Maria. The right hand continues the melody: D4 (half), C4-B3 (quarter), A3 (half), G3 (half), F3 (half), E3 (half). The left hand continues with chords: F major (F, A, C), F major (F, A, C), F major (F, A, C), F major (F, A, C), F major (F, A, C), and F major (F, A, C).

32



37

