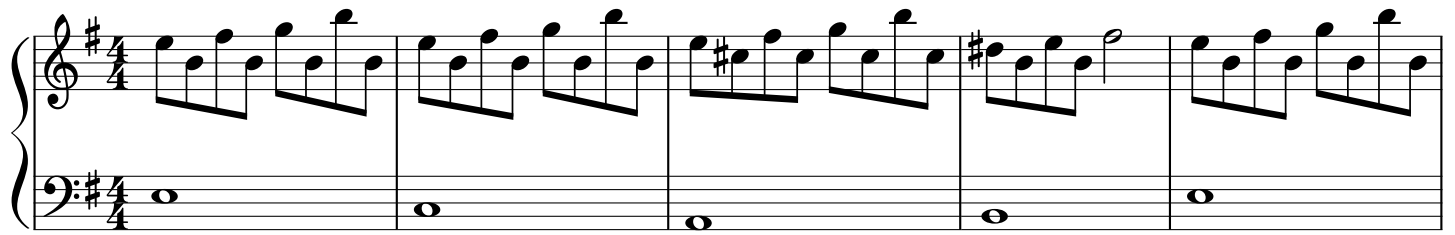


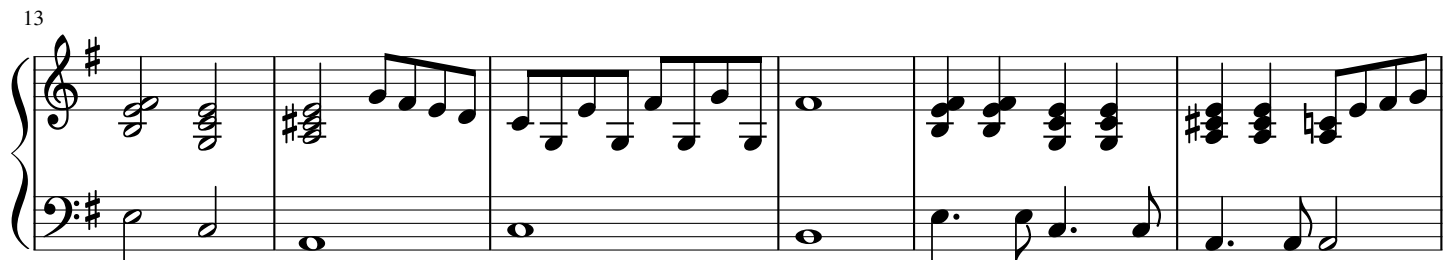
No time to die

$\text{♩} = 38$



I should have known

I'd leave alone



Just goes to show

That the blood you bleed is just the blood you one

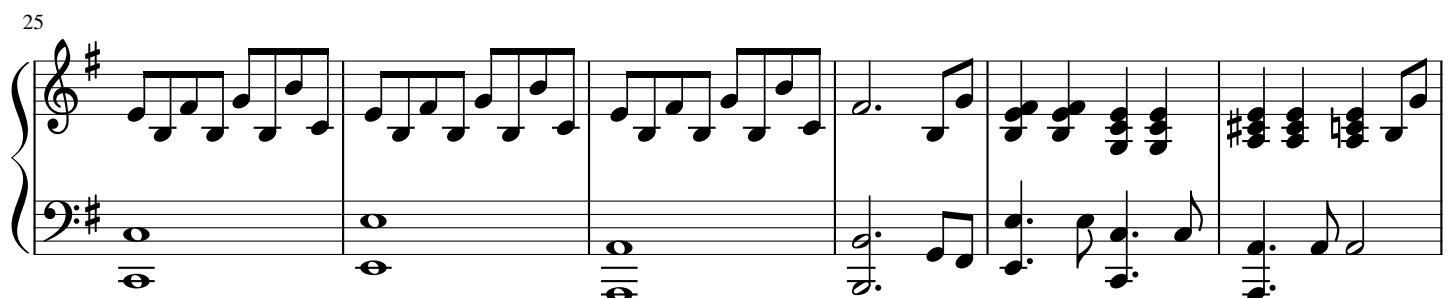
We were a pair



But I saw you there

Too much to bear

You were my life, but life is far away from fair



Was I stupid to love you?

Was it obvious to everybody else?

That I'd fallen for a lie

Was I reckless to help?

31

You were never on my side Fool me once, fool me twice Now you'll never see my cry
Are you death or paradise? There's just no time to die

37

You were never on my side Fool me once, fool me twice Now you'll never see my cry
Are you death or paradise? There's just no time to die