

Black Swan

BTS

Arranged by Myee89

♩ = 147

Measures 1-5 of the piano arrangement. The key signature has one flat (Bb) and the time signature is 4/4. The tempo is marked as quarter note = 147. The right hand features a complex melody with eighth and sixteenth notes, while the left hand provides a simple harmonic accompaniment with whole and half notes.

6

Measures 6-10. The melody in the right hand continues with intricate patterns, including some triplets. The left hand maintains a steady accompaniment.

11

Measures 11-15. The right hand melody becomes more melodic with some rests, while the left hand continues its accompaniment.

16

Measures 16-21. This section features more complex rhythmic patterns in both hands, with the right hand having several measures of sixteenth-note runs.

22

Measures 22-27. The final section of the provided score, showing the continuation of the piano arrangement with intricate melodic and harmonic details.

28

Measures 28-33. Treble clef: 28 (eighth notes, quarter rest), 29 (eighth notes), 30 (eighth notes, quarter rest), 31 (eighth notes), 32 (eighth notes, quarter rest), 33 (eighth notes, quarter rest). Bass clef: 28 (eighth notes), 29 (eighth notes), 30 (eighth notes), 31 (eighth notes), 32 (eighth notes), 33 (eighth notes). Brackets: 28-29, 30-31, 32-33.

34

Measures 34-38. Treble clef: 34 (eighth notes), 35 (eighth notes), 36 (eighth notes), 37 (eighth notes, dotted quarter), 38 (eighth notes, dotted quarter). Bass clef: 34 (eighth notes), 35 (eighth notes, quarter rest), 36 (eighth notes, quarter rest), 37 (eighth notes, quarter rest), 38 (eighth notes, quarter rest). Brackets: 34-35, 36-37, 38.

39

Measures 39-43. Treble clef: 39 (eighth notes, dotted quarter), 40 (eighth notes, dotted quarter), 41 (eighth notes), 42 (eighth notes), 43 (eighth notes). Bass clef: 39 (eighth notes, quarter rest), 40 (eighth notes, quarter rest), 41 (eighth notes), 42 (eighth notes), 43 (eighth notes). Brackets: 39-40, 41-42, 43.

44

Measures 44-48. Treble clef: 44 (eighth notes), 45 (eighth notes), 46 (eighth notes), 47 (eighth notes), 48 (eighth notes). Bass clef: 44 (eighth notes), 45 (eighth notes), 46 (eighth notes), 47 (eighth notes), 48 (eighth notes). Brackets: 44-45, 46-47, 48.

49

Measures 49-53. Treble clef: 49 (eighth notes), 50 (eighth notes), 51 (eighth notes), 52 (eighth notes), 53 (eighth notes). Bass clef: 49 (eighth notes), 50 (eighth notes), 51 (eighth notes), 52 (eighth notes), 53 (eighth notes). Brackets: 49-50, 51-52, 53.

54

Measures 54-58. Treble clef: 54 (eighth notes), 55 (eighth notes), 56 (eighth notes), 57 (eighth notes), 58 (eighth notes). Bass clef: 54 (eighth notes), 55 (eighth notes), 56 (eighth notes), 57 (eighth notes), 58 (eighth notes). Brackets: 54-55, 56-57, 58.

59

65

69

74

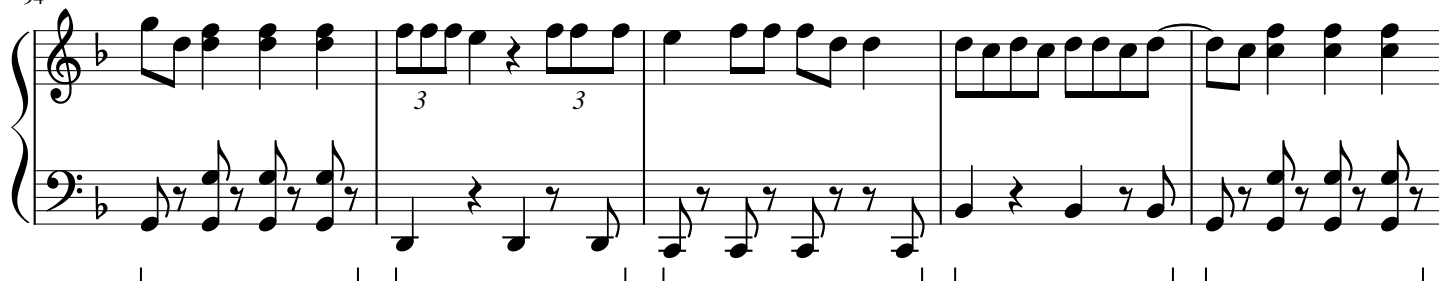
79

84

89



94



99



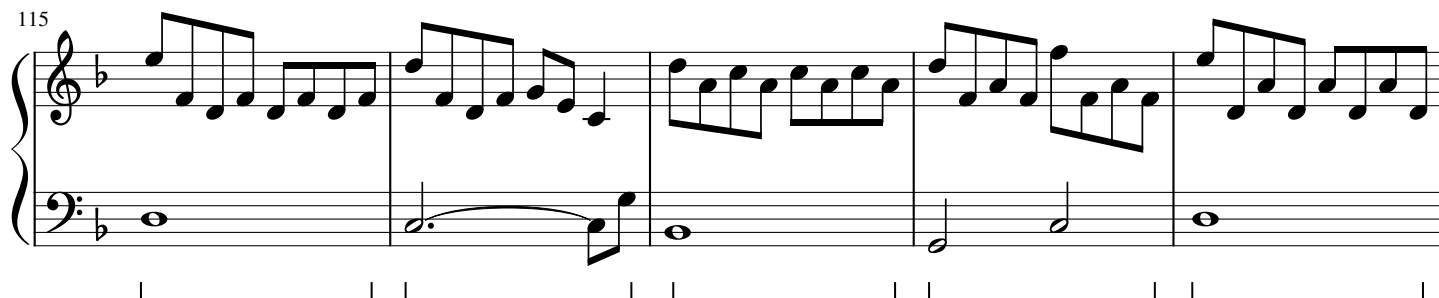
104



109



115



120

