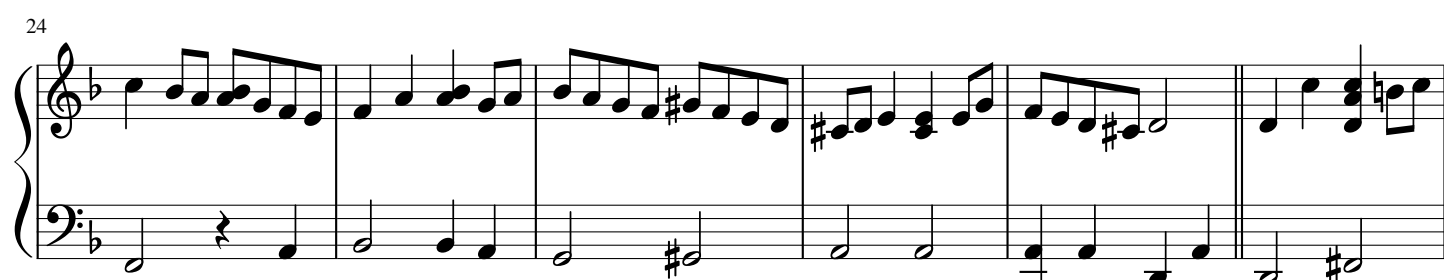
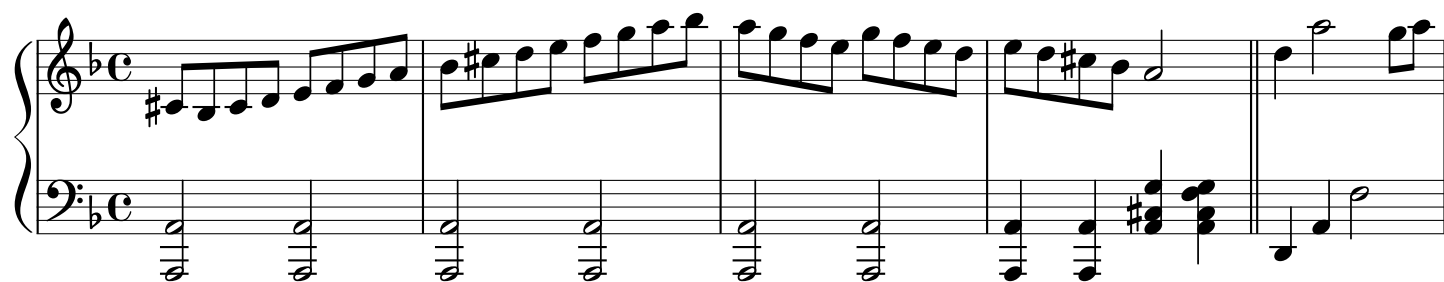


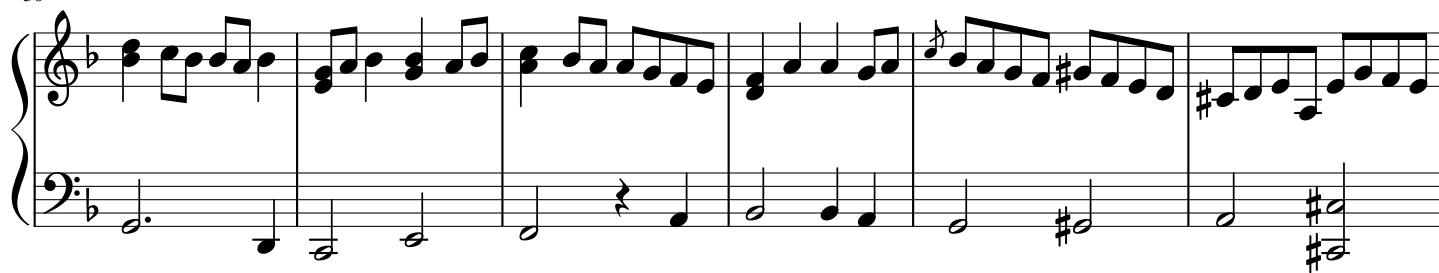
Calikusu

Королёк-птичка певчая

Esin Engin



30



36



44



52



57



61



65

Measures 65-68. Treble clef: eighth-note runs with various accidentals (sharps and naturals). Bass clef: eighth-note accompaniment.

69

Measures 69-72. Treble clef: eighth-note runs with accidentals. Bass clef: block chords (dyads and triads).

73

Measures 73-75. Treble clef: dense sixteenth-note chords. Bass clef: block chords.

76

Measures 76-79. Treble clef: dense sixteenth-note chords. Bass clef: eighth-note accompaniment.

80

Measures 80-83. Treble clef: dense sixteenth-note chords. Bass clef: eighth-note accompaniment.

84

Measures 84-87. Treble clef: chords with a key signature change to B-flat major (indicated by a 2/4 time signature change and a B-flat). Bass clef: eighth-note accompaniment.

92

System 1 (Measures 92-98): Treble clef contains a melodic line with eighth and sixteenth notes. Bass clef contains a supporting line with quarter and eighth notes. A repeat sign is at the end of measure 98.

99

System 2 (Measures 99-104): Treble clef continues the melodic line. Bass clef has a supporting line. A repeat sign is at the end of measure 104.

105

System 3 (Measures 105-110): Treble clef has a more active melodic line. Bass clef has a supporting line. A repeat sign is at the end of measure 110.

110

System 4 (Measures 110-115): Treble clef continues the melodic line. Bass clef has a supporting line. A repeat sign is at the end of measure 115.

116

System 5 (Measures 116-121): Treble clef has a melodic line with some rests. Bass clef has a supporting line. A repeat sign is at the end of measure 121.

122

System 6 (Measures 122-127): Treble clef continues the melodic line. Bass clef has a supporting line. A repeat sign is at the end of measure 127.

