

СМІЮТЬСЯ, ПЛАЧУТЬ СОЛОВ'І

СЛОВА О. ОЛЕСЯ

ОБРОБКА Г. ЖУКОВСЬКОГО

Ноты с сайта - www.notarhiv.ru

Пожвавлено ♩ = 112

нар

f

mp

First system of the piano introduction. It consists of two staves. The right staff has a treble clef and a key signature of two sharps (F# and C#). The left staff has a bass clef and the same key signature. The music is in 3/4 time. The first measure is marked with a forte (*f*) dynamic. The second measure is marked with a mezzo-piano (*mp*) dynamic. The music features a mix of eighth and sixteenth notes, with some chords and arpeggiated figures.

Second system of the piano introduction. It consists of two staves. The right staff has a treble clef and a key signature of two sharps. The left staff has a bass clef and the same key signature. The music continues with a mix of eighth and sixteenth notes. The first measure of this system is marked with a forte (*f*) dynamic. The system concludes with a whole note chord in the right hand.

rit.

p a tempo

Смі_ ють_ся, пла_ чуть со_ ло_ в'ї і

rit.

p a tempo

Vocal and piano accompaniment for the first line of the song. The vocal line is on a bass clef staff with a key signature of two sharps. It begins with a *rit.* (ritardando) marking and a ***p*** (piano) dynamic. The lyrics are: "Смі_ ють_ся, пла_ чуть со_ ло_ в'ї і". The piano accompaniment is on a grand staff (treble and bass clefs) with a key signature of two sharps. It begins with a *rit.* marking and a ***mp*** (mezzo-piano) dynamic. The piano part features a prominent triplet figure in the right hand, which continues throughout the system. The system concludes with a ***p*** marking and a *a tempo* instruction.

б'ють піс_ня_ ми в гру_ ди. Ці_ луй ї_ ї, ці_ луй ї_ ї: знов

мо_ лодість не бу_ де, ці_ луй, цілуй, ці_ луй ї_ ї: знов

мо_ ло_ дість не бу_ де!

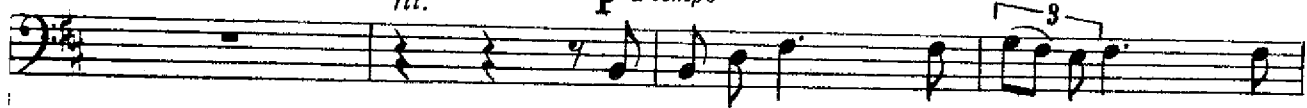
acceler.

acceler.

f

rit.

p a tempo



Ти не ди-вись, що бу- де там, чи



rit.

p a tempo



за-буття, чи зра- да, вес- на і-де на- зустріч нам, во-



mf

poco rit.

ten.



-на в цей час нам ра- да, вес- на і-де на- зустріч нам, вес-



mp poco rit.

colla parte

Швидко

на в цей час нам ра- да.

p *f*

Detailed description: This system contains the first two staves of music. The top staff is a vocal line in bass clef with a key signature of one sharp (F#) and a 4/4 time signature. The lyrics are "на в цей час нам ра- да." The bottom two staves are piano accompaniment. The first staff is in treble clef and the second in bass clef. Dynamics include piano (*p*) and forte (*f*). The piano part features arpeggiated chords and moving bass lines.

mf *p rit.*

Detailed description: This system shows the piano accompaniment for the second system. It consists of two staves: treble and bass clef. The music continues with arpeggiated textures. Dynamics include mezzo-forte (*mf*) and piano *rit.* (*p rit.*).

Не швидко

За- ги- не все без во- роття, що візьме час, що

p *pp*

3

8

Detailed description: This system contains the second two staves of music. The top staff is a vocal line in bass clef with a key signature of one sharp (F#) and a 4/4 time signature. The lyrics are "За- ги- не все без во- роття, що візьме час, що". The bottom two staves are piano accompaniment. The first staff is in treble clef and the second in bass clef. Dynamics include piano (*p*) and pianissimo (*pp*). A triplet of eighth notes is marked with a "3" above it. The piano part features arpeggiated chords and moving bass lines. The number "8" is written at the bottom right of the page.

лю_ ди, по_ гас_ не в сер_ ці ба_гат_тя і за_ хо_ло_ нуть

лю_ ди, по_ гас_ не в сер_ ці ба_гат_тя і за_ хо_ло_ нуть

cresc.

ten.

гру_ ди, по_ гас_ не в сер_ ці ба_гат_тя і за_ хо_ло_ нуть

гру_ ди, по_ гас_ не в сер_ ці ба_гат_тя і за_ хо_ло_ нуть

f colla parte

m. d.

Темп I

rit.

p

гру_ ди. і схочеш ти вер_ нуть со_бі, як

гру_ ди. і схочеш ти вер_ нуть со_бі, як

mp

rit.

p

Фауст, дві ми_ ну_ лі, га знай,—боги над нас ску_пі, над

нас глухі й не_ чу_ лі; о_ тож, цілуй, ці_ луй ї_ ї, знов

rit.

Повільно Швидко

мо_ ло_ дість не бу_ де!

mp *mf* *f*