


ТЯЖЕЛО, НЕ СТАЛО СИЛЫ...

Слова Э. ГУБЕРА

Ноты с сайта - www.notarhiv.ru

Тихо с чувством (♩ = 72)

нар



First system of piano introduction. Treble clef, key signature of one sharp (F#), 6/8 time signature. The music consists of a melodic line in the right hand and a bass line in the left hand. The right hand starts with a quarter note G4, followed by a half note G4-A4, and then a quarter note G4. The left hand starts with a quarter note G2, followed by a half note G2-A2, and then a quarter note G2. The system ends with a repeat sign.



Second system of piano introduction. The right hand continues with a quarter note G4, followed by a half note G4-A4, and then a quarter note G4. The left hand continues with a quarter note G2, followed by a half note G2-A2, and then a quarter note G2. The system ends with a repeat sign.



Third system of piano introduction. The right hand continues with a quarter note G4, followed by a half note G4-A4, and then a quarter note G4. The left hand continues with a quarter note G2, followed by a half note G2-A2, and then a quarter note G2. The system ends with a repeat sign.

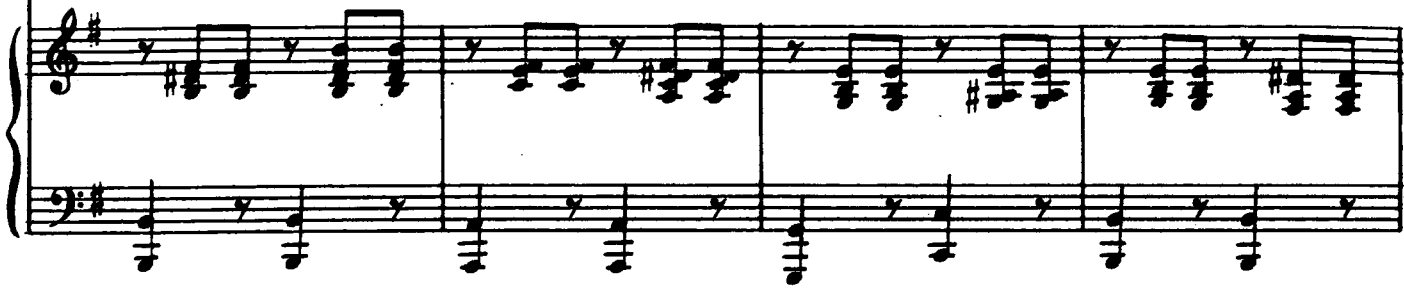
1. Тя - же -
2. На по -
3. А да -



Vocal melody and piano accompaniment. The vocal line is in the treble clef, and the piano accompaniment is in the bass clef. The key signature is one sharp (F#) and the time signature is 6/8. The lyrics are: - ло, ме ста - ло си - лы! Но - ет грудь мо -
- кой по - ра пе - ча - ли, вре - мя спать ко -
- ле - ко ли до гро - ба! От -дох - нут бы



-я; зло_е го - ре до мо - ги - лы до - та - шу ли
 - стям; ду - шу стра - сти ра - зо - рва - ли, вре - мя спать стра -
 я, от -дох - ну - ли бы мы о - ба, я да грусть мо -



я? Зло_е го - ре до мо - ги - лы
 - стям! Ду - шу стра - сти ра - зо - рва - ли,
 - я! От -дох - ну - ли бы мы о - ба,



Для повторения

Для окончания



до - та - шу ли я? // - я!
 вре - мя спать стра - стям!
 я да грусть мо -

